

TERRAIN AREAS



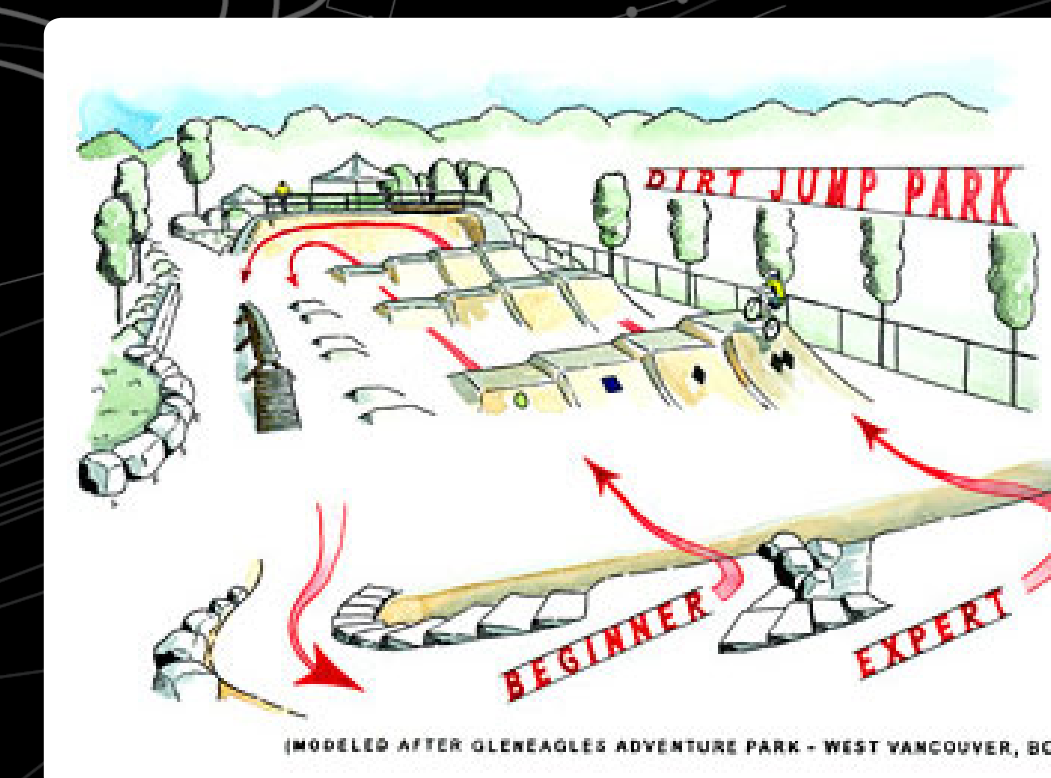
1 DUAL SLALOM RIDERS go head-to-head in a race to the bottom on parallel courses that include dirt rollers, jumps, and berms.

4 TERRAIN AREAS will include natural and artificial terrain physically separated from the traditional trail system. They will accommodate a wide range of abilities, with opportunities for skill building and progressively difficult challenges.

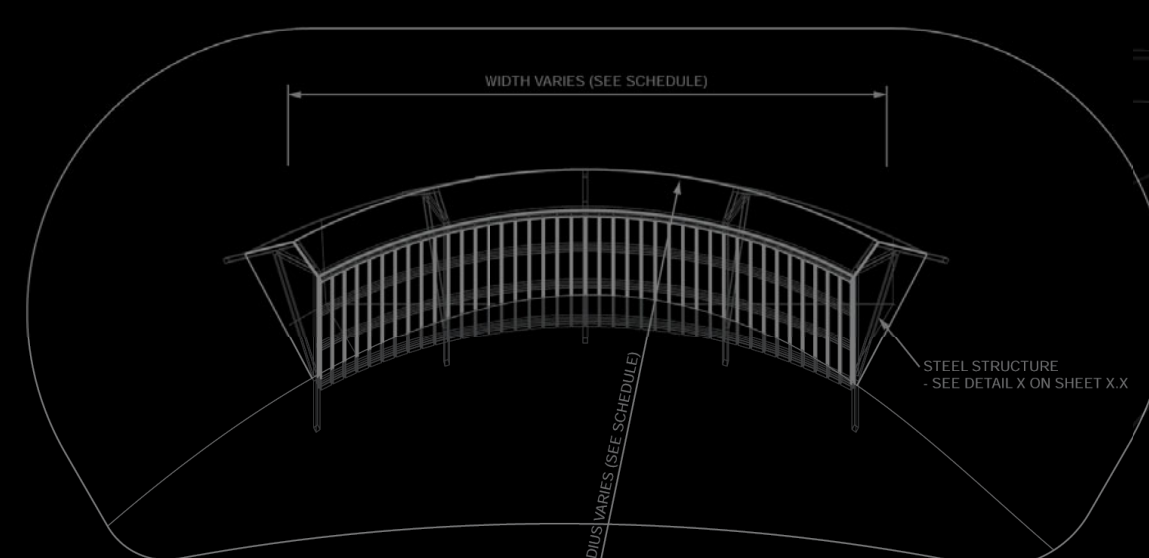


3 A DIRT JUMP ZONE includes an elevated start hill followed by a rhythmic series of dirt jumps of all sizes and shapes. Slopestyle includes jumps, berms, and various obstacles for riders to practice skills and experiment by linking freestyle maneuvers while letting gravity do the work.

2A&2B A PUMP TRACK is a continuous loop of dirt berms and smooth bumps (called rollers). Riders gain speed by "pumping" the terrain with their arms and legs. Pump tracks are fun, a great workout, build new skills, and provide a non-threatening alternate to jumps or technical features.



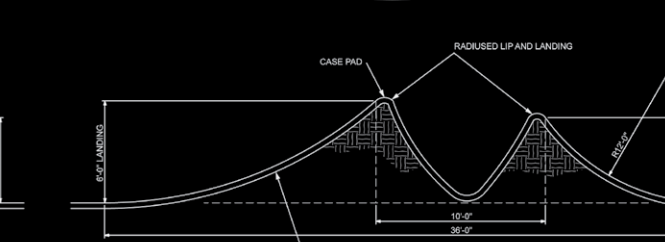
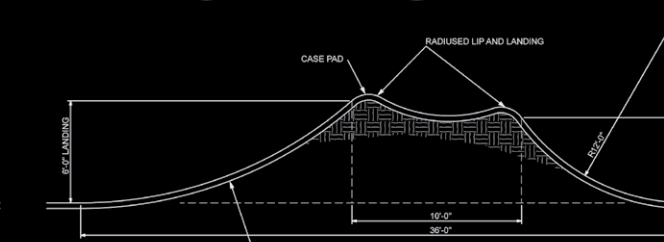
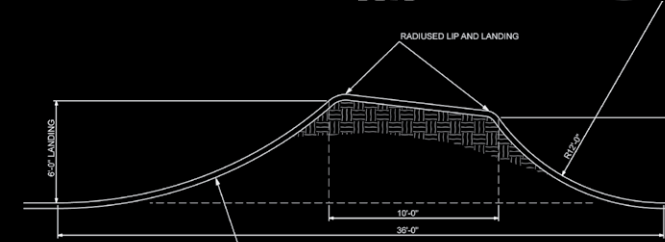
WWW.VALMONTBIKEPARK.COM



4 TYPICAL CURVED WALL RIDE - PLAN
0.0 SCALE: 1/4" = 1'-0"



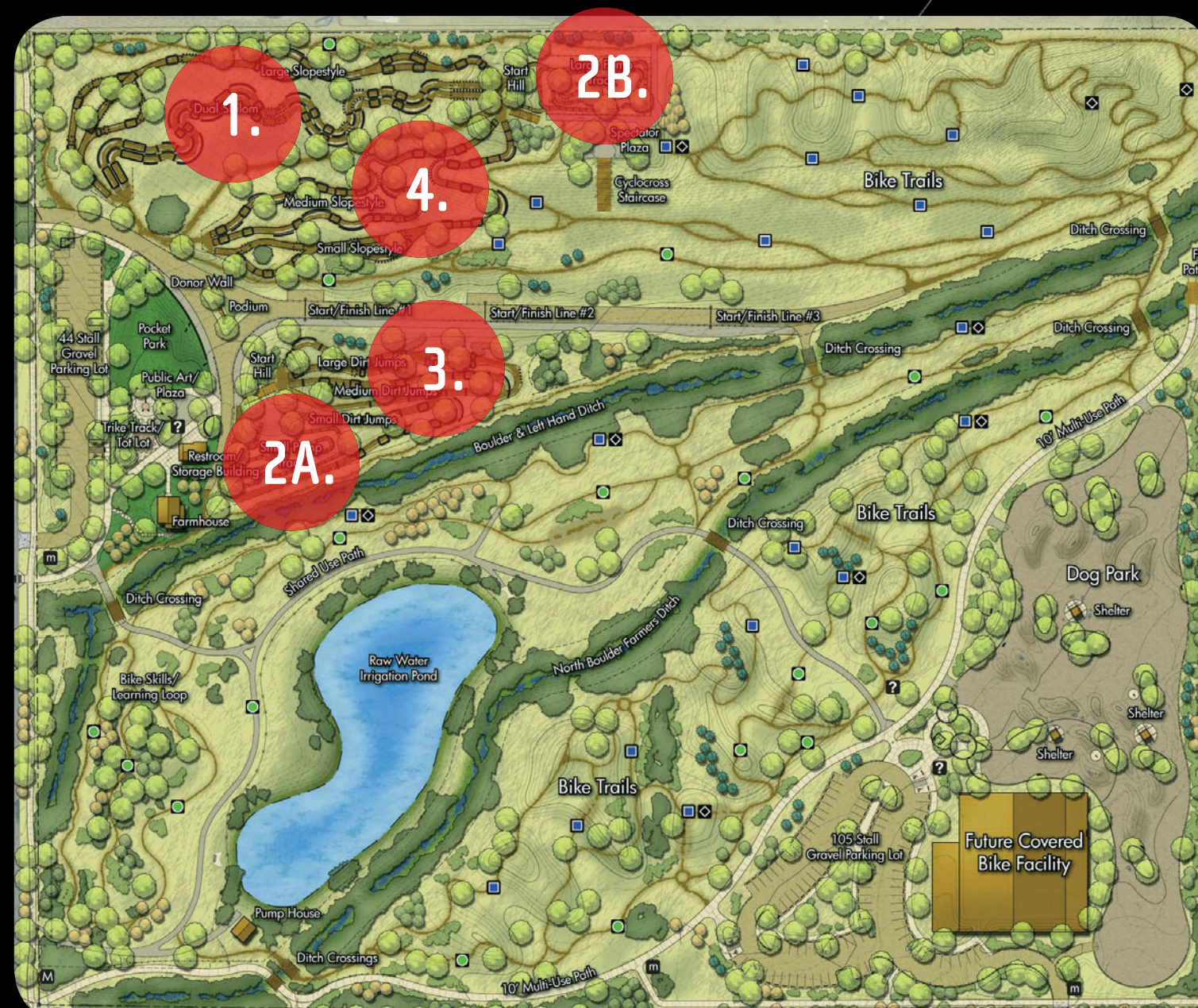
2 TYPICAL DIRT TABLETOP JUMP - SECTION
0.0 SCALE: 1/4" = 1'-0"



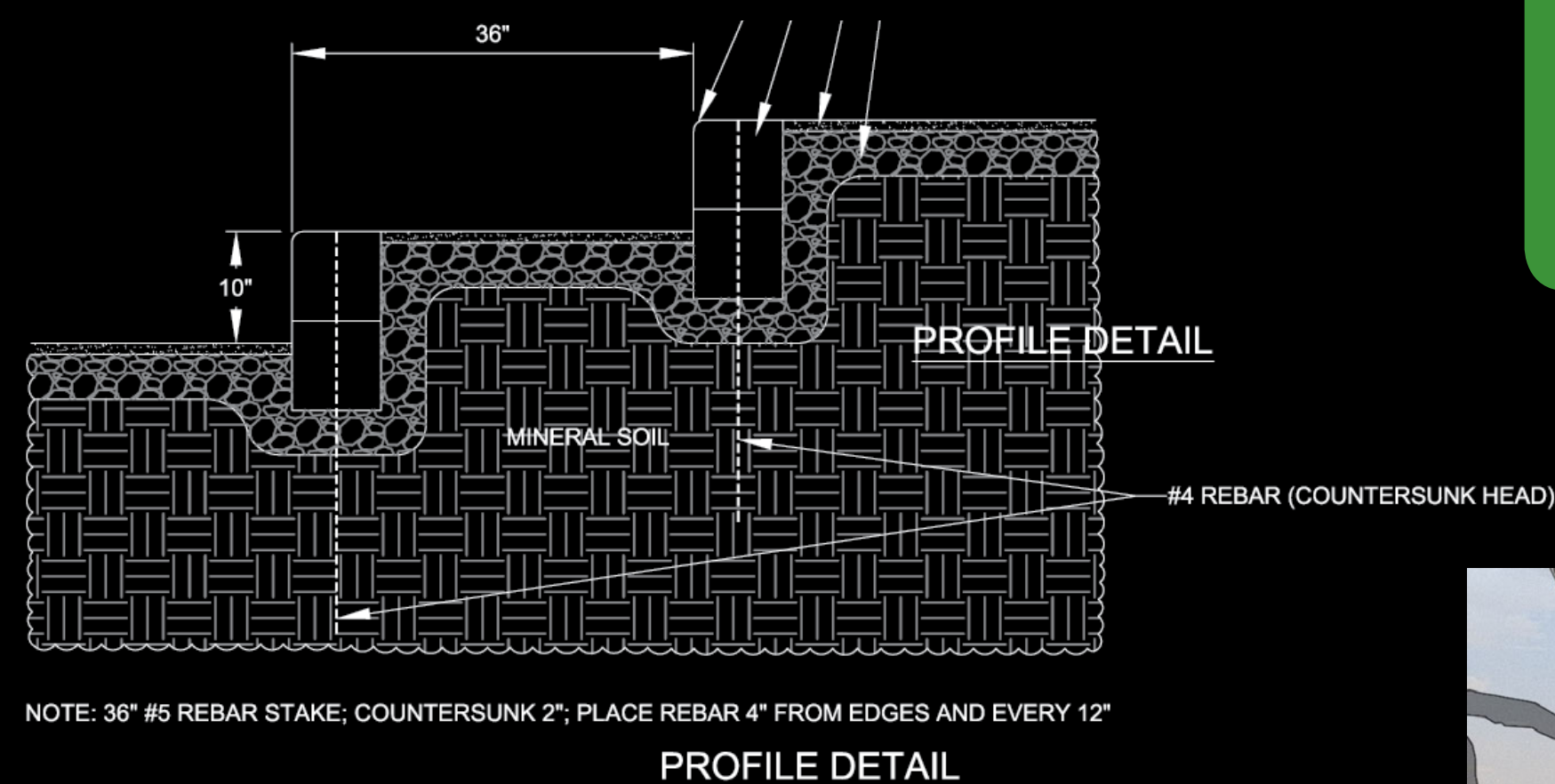
2 STEEL FRAME JUMP LIP - SIDE ELEVATION
0.0 SCALE: 1/2" = 1'-0"



4 STEEL FRAME JUMP LIP - DETAIL
0.0 SCALE: NTS

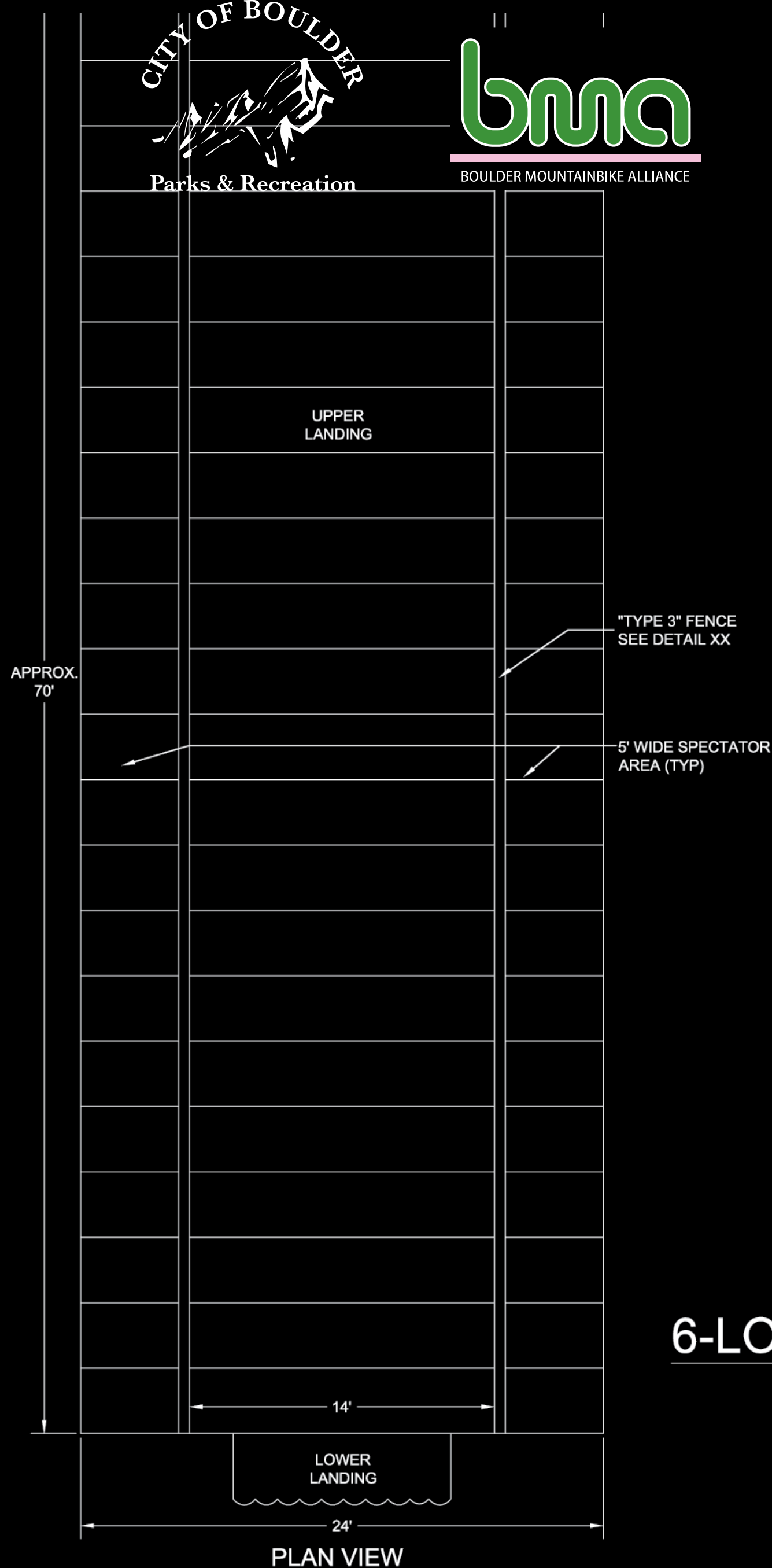


CYCLOCROSS



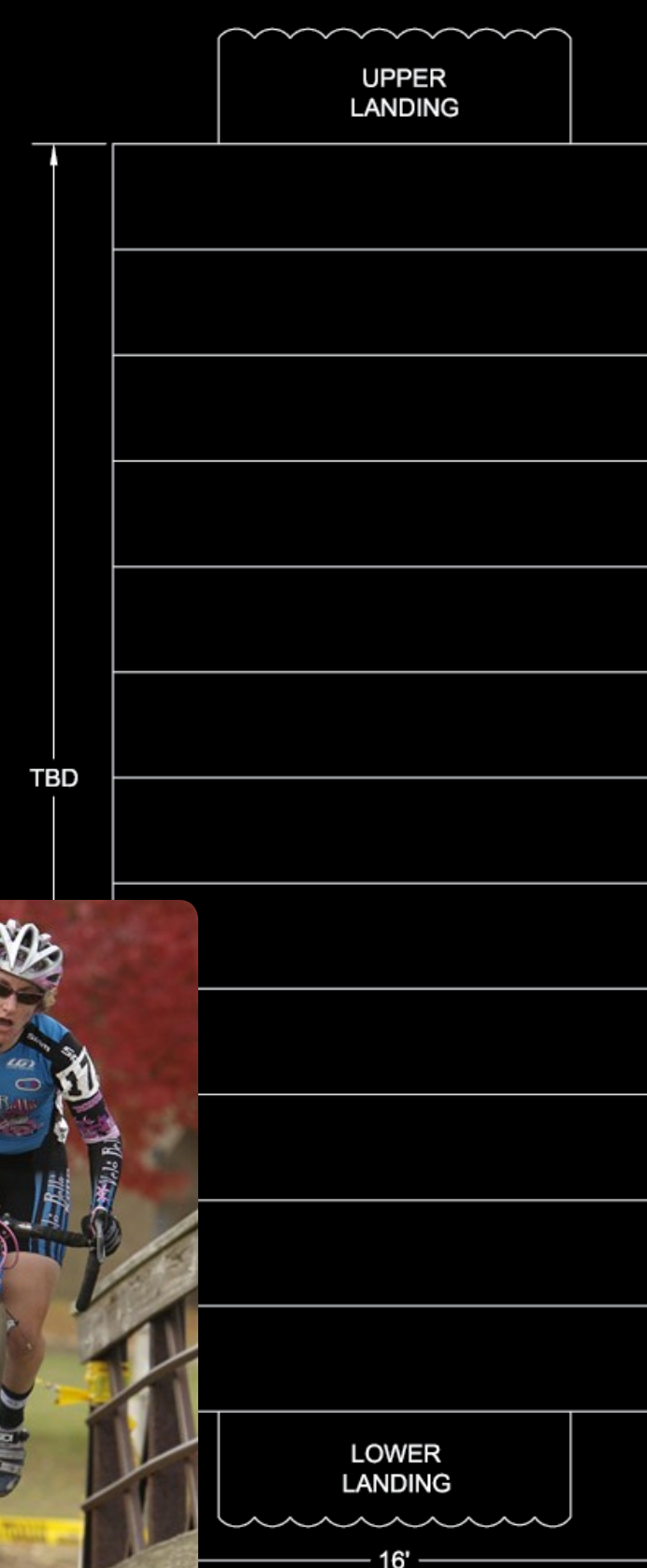
STAIRS

BARRIERS

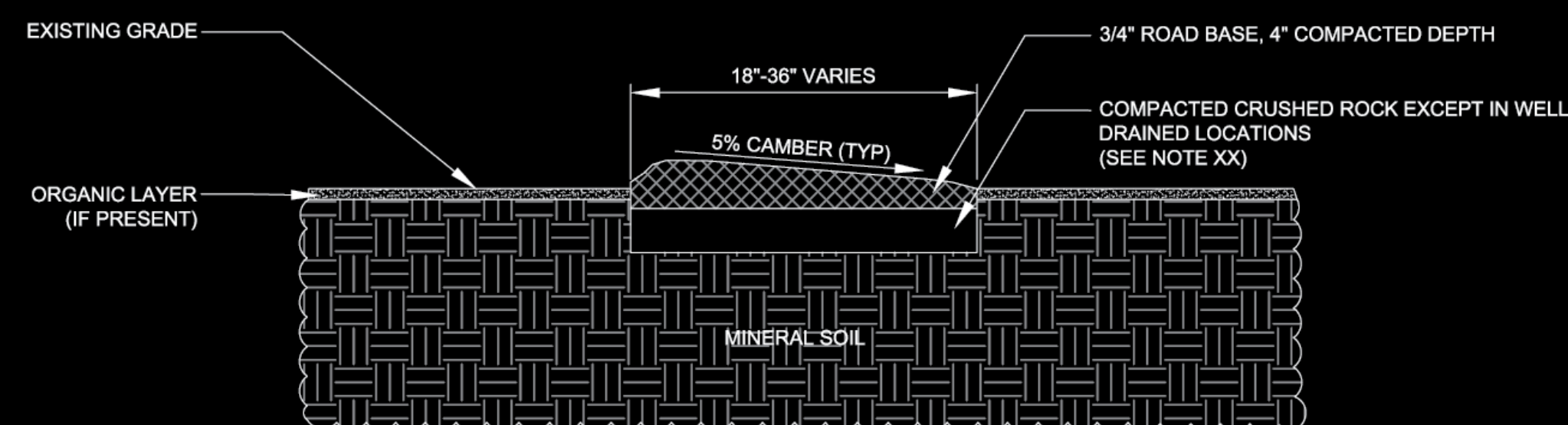


6-LONG CYCLO-CROSS STAIRCASE

ELEVATION



8-SHORT CYCLO-CROSS STAIRCASE

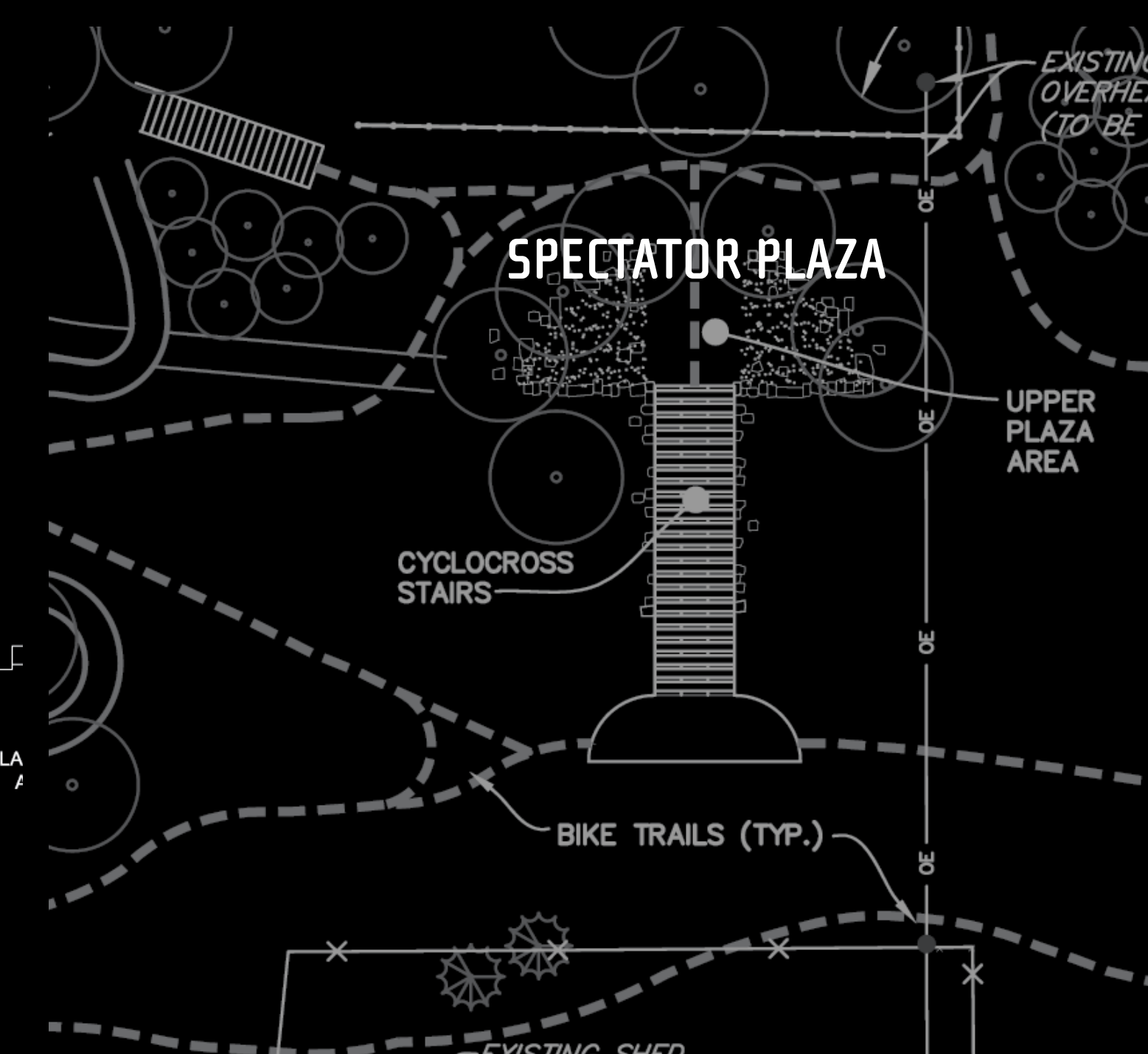


NOTE: TO ENSURE DRAINAGE ON FLAT GROUND, THE TREAD SHOULD BE CAMBERED, NOT CROWNED, IN MOST INSTANCES. CAMBERING SHOULD BE SLOPED TOWARDS THE INSIDE OF A TURN. GREATER CAMBERING MAY BE REQUIRED IN LARGER TURNS. CAMBERING IS NOT NEEDED ON THE ASCENDING OR DESCENDING FACES OF UNDULATIONS.

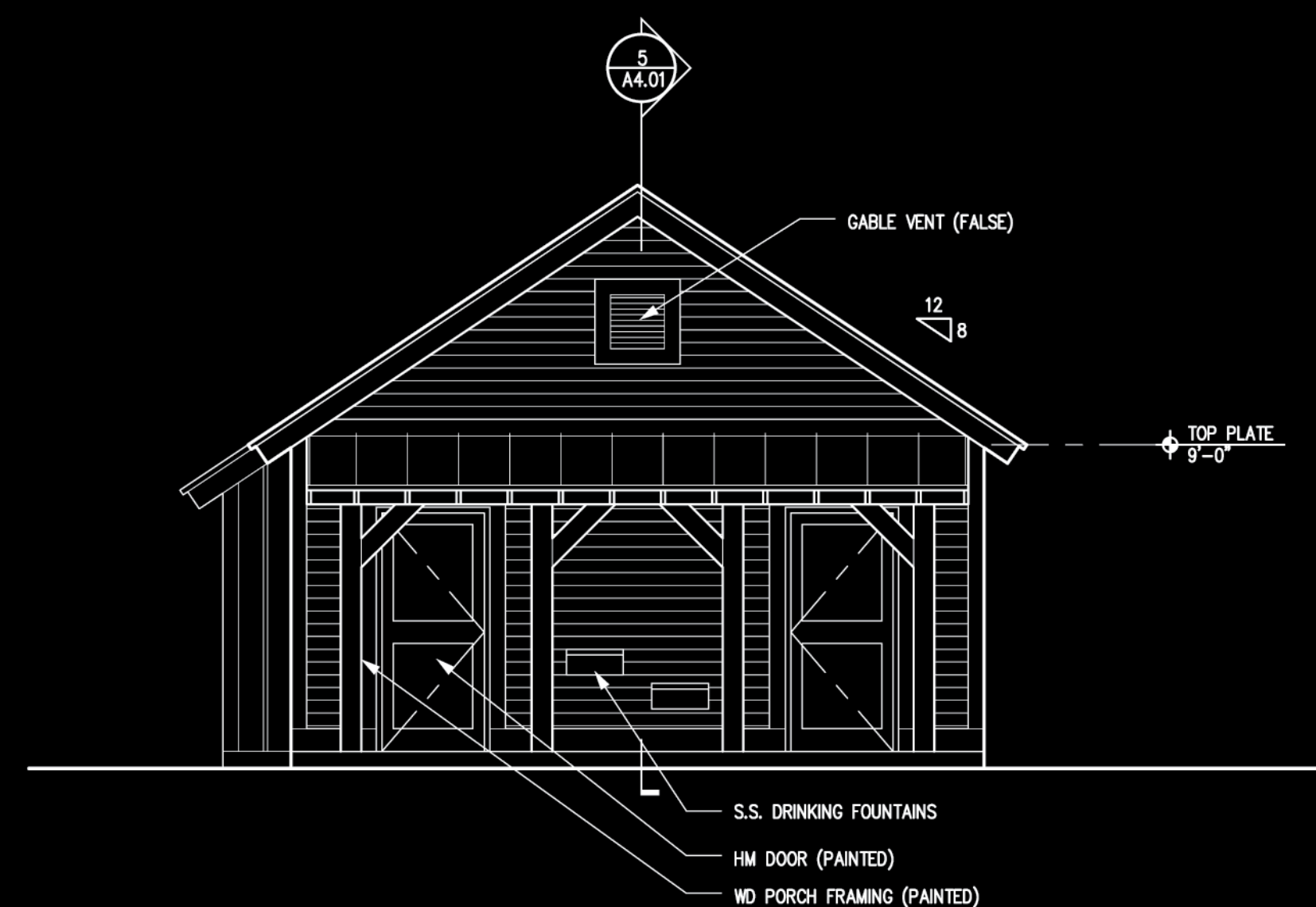
PROFILE DETAIL

7-SURFACED TRAIL

SAND PITS



ARCHITECTURE



1 WEST ELEVATION
SCALE: 1/4" = 1'-0"

2 RESTROOM BUILDING

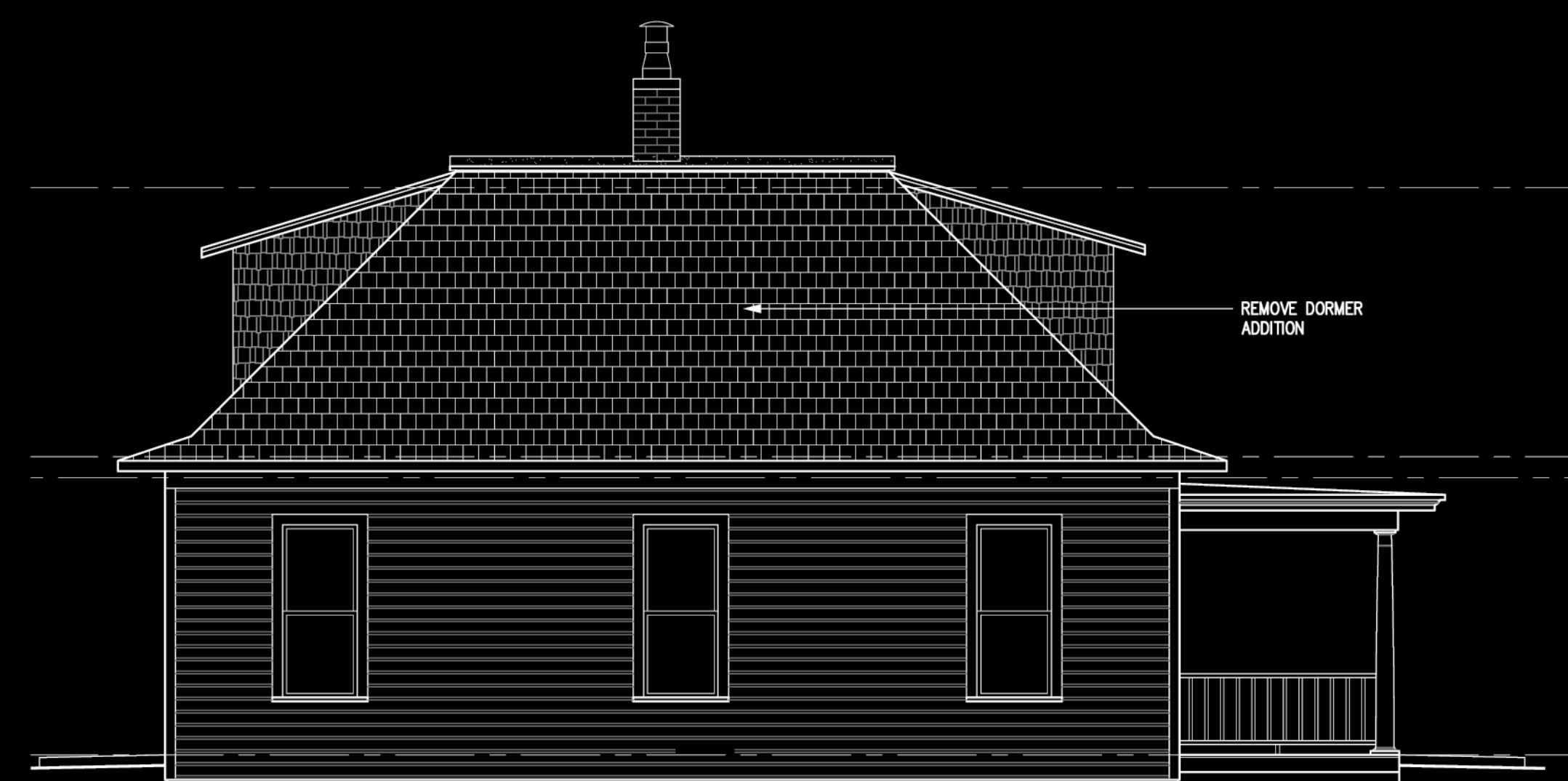


2 NORTH ELEVATION
SCALE: 1/4" = 1'-0"

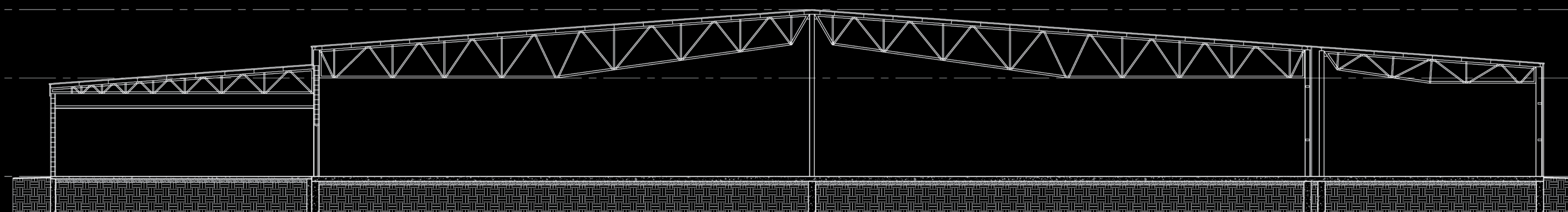


1 SOUTH ELEVATION
SCALE: 1/4" = 1'-0"

1 RENOVATED FARMHOUSE



3 FUTURE COVERED BIKE FACILITY



1 EXISTING BUILDING SECTION
SCALE: 1/8" = 1'-0"



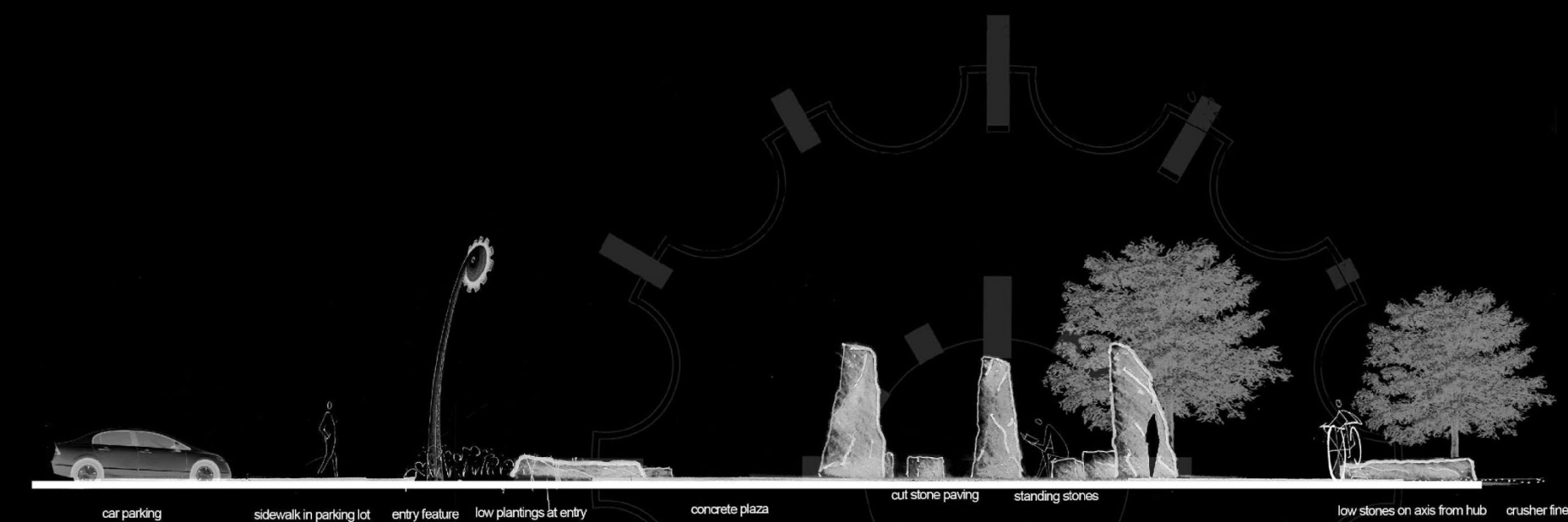
HAVE YOU DONATED YET?

WWW.VALMONTBIKEPARK.COM

PUBLIC ART



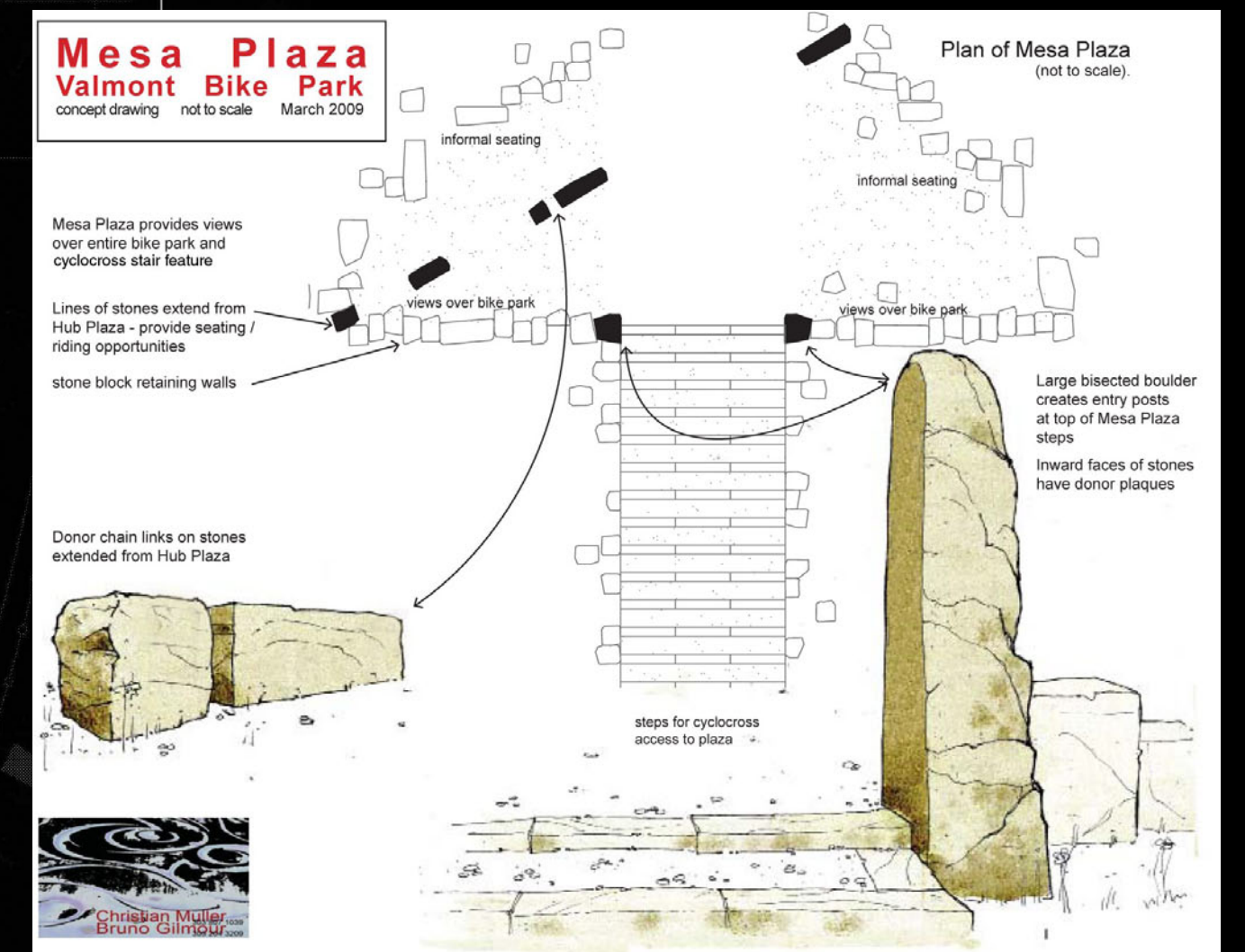
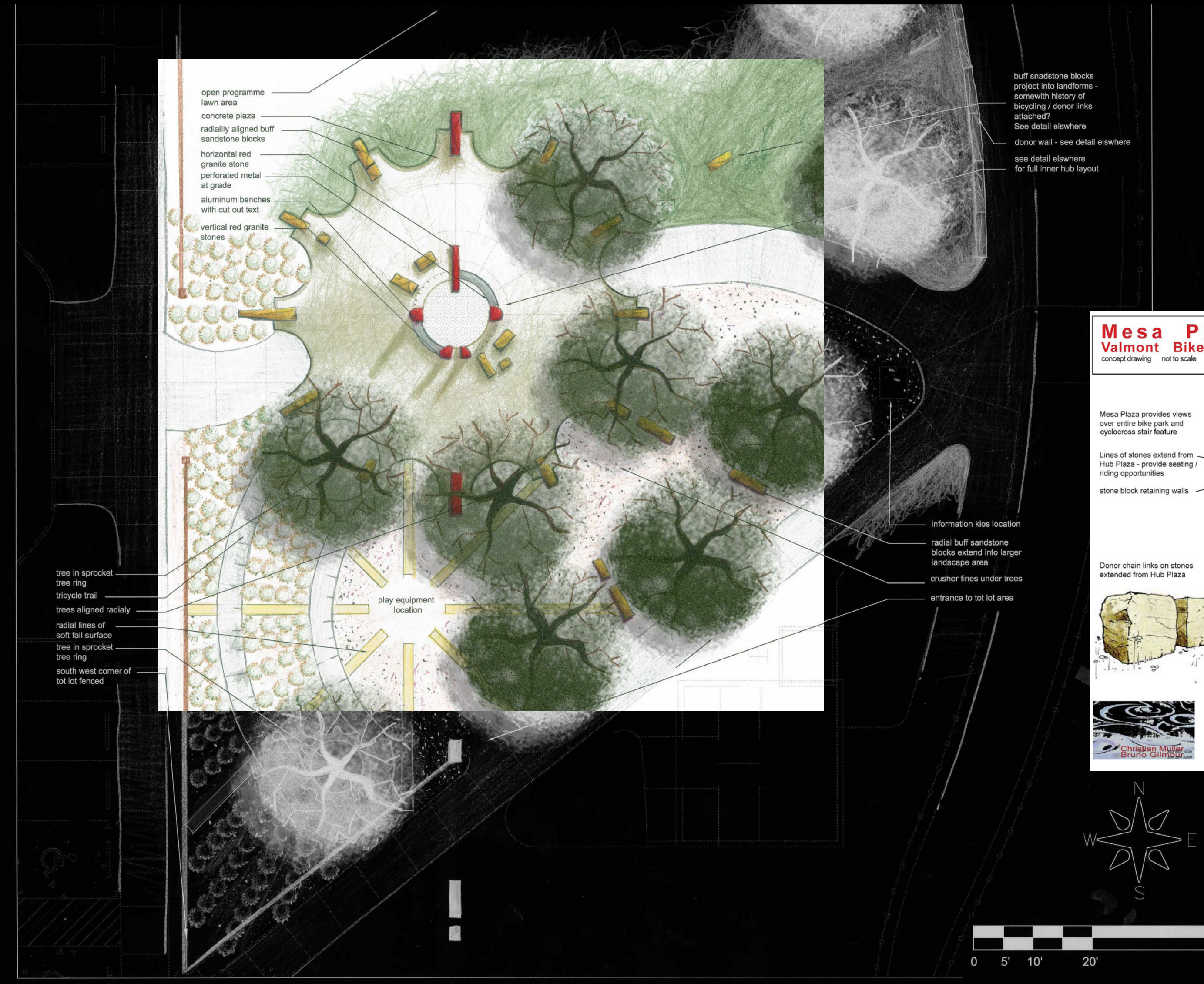
SECTION THROUGH HUB PLAZA ART (LOOKING EAST)



SECTION THROUGH HUB PLAZA ART (LOOKING NORTH)

HAVE YOU DONATED YET?

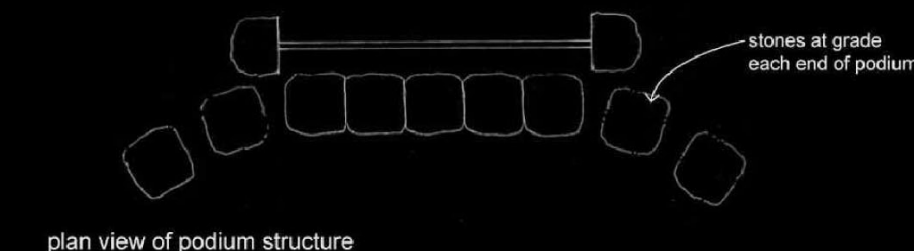
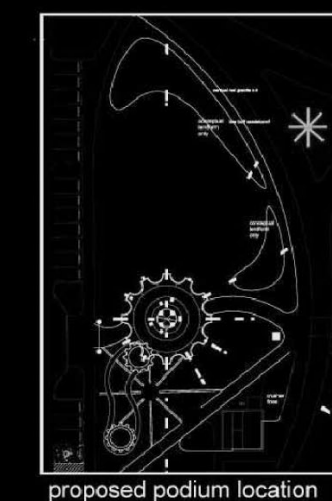
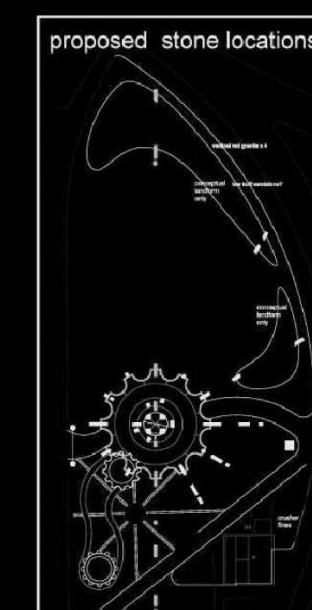
WWW.VALMONTBIKEPARK.COM



Donor stone blocks along 'spoke' lines with bicycle history details

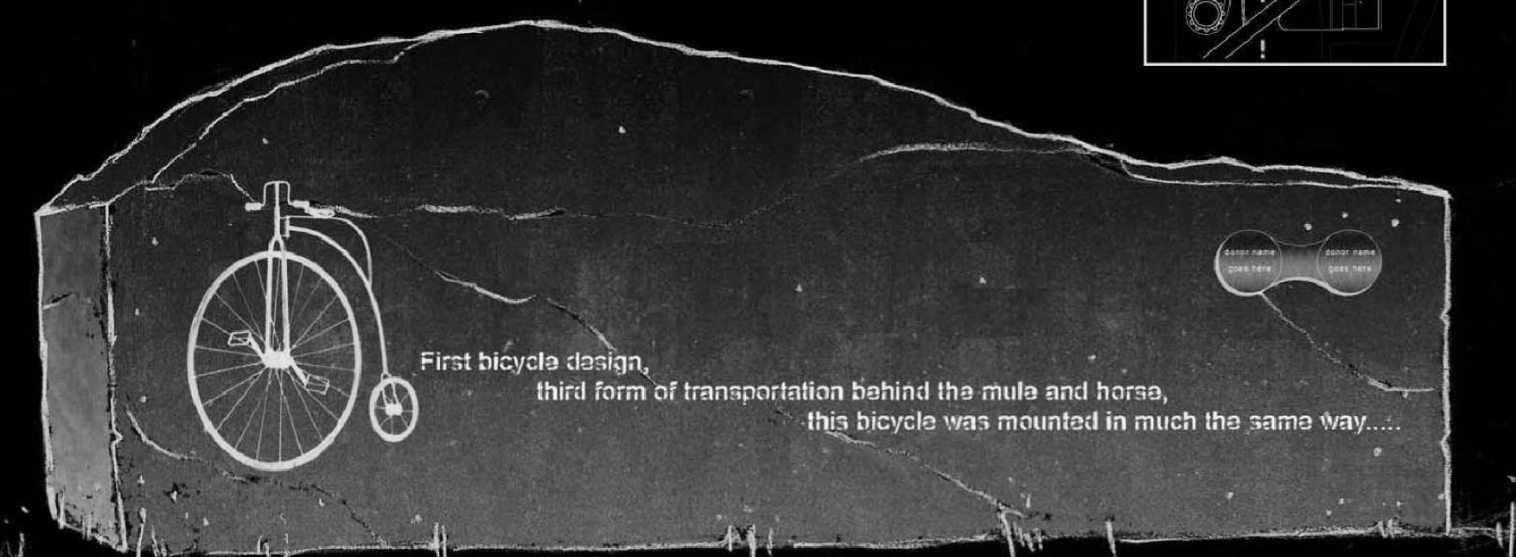
concept drawing not to scale Feb 2009

- time line of bicycle history, narrated chronologically on series of 'spoke' benches.
- historical icon and text on each successive block
- icon details to be either or digitally cut metal, or sand blasted.
- text to be sand blasted.
- donation buys bench and detailing
- donated links to be engraved aluminum, same as on donor wall

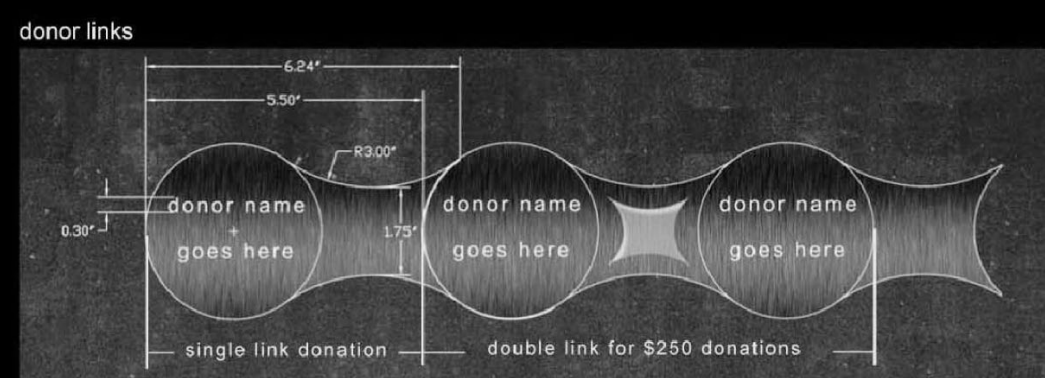
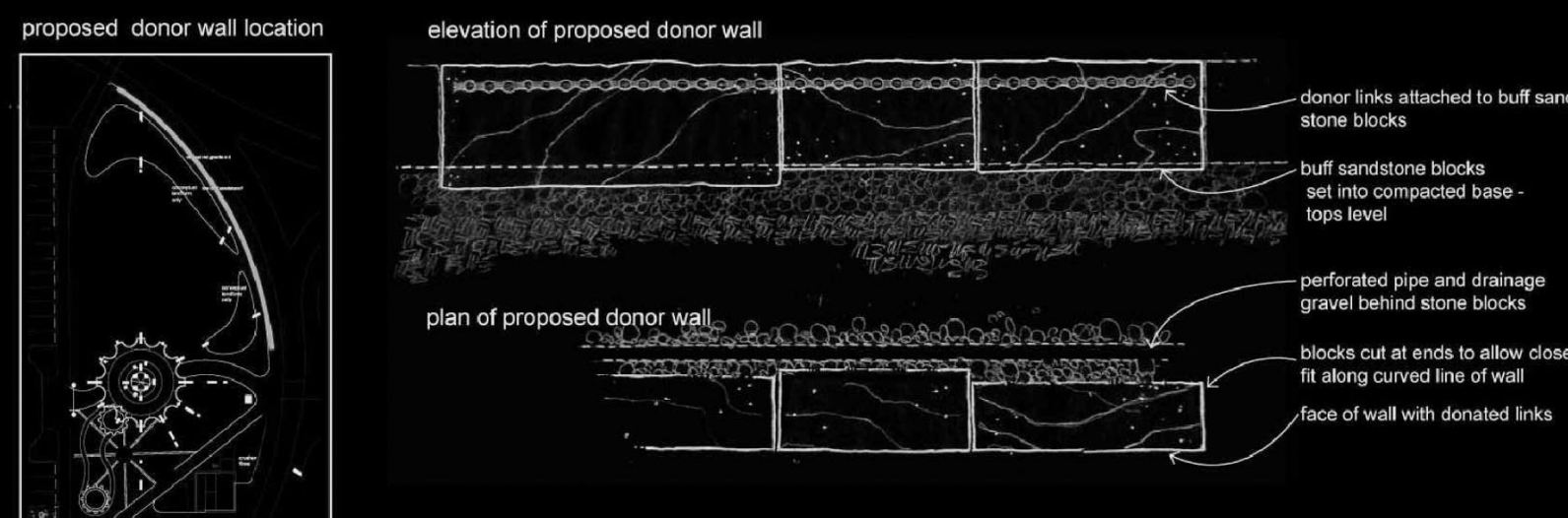


Podium Structure
Valmont Bike Park
concept drawing not to scale
February 2009

Christian Muller
Bruno Gilmour



Christian Muller
Bruno Gilmour



Donor "bike chain links"
concept drawing not to scale Feb 2009

Christian Muller
Bruno Gilmour

- donated links to be engraved aluminum
 - Mounted vertically on wall
 - To be cut in quantity engraved as donations made
- various levels of donation:
- \$100 (single link, 16 spaces, 2 lines)
 - \$250 (double link, 16 spaces, up to 4 lines)
 - \$500 (double link, 16 spaces, up to 8 lines)
 - \$1000 (logo, plus text)



NOTE: FINAL DOCUMENTATION IN PROGRESS

NOTE: CONCEPT DRAWINGS ONLY. FINAL DESIGN IN PROGRESS